

# ProBatch™ M1Series™



ProBatch™ M1Series™ Automation System

The **ProBatch™ M1Series™** concrete automation system is an excellent choice for producers who currently have an existing electrical manual control panel, but need to automate their plant. Allowing the use of an existing manual control panel makes the **M1Series™** the most economical model in the **ProBatch™** automation family. Whether the application is ready-mix, paving, or a products plant, the **M1Series™** can provide the automation needed to streamline production. Powered by **batchWare™**, the **M1Series™** system has a large variety of options available to meet the needs of the most demanding producer. Large, easy to use rocker switches are easily accessible on the front of the enclosure to control the manual metering and discharging of admixtures when necessary. Due to its rugged design and state-of-the-art components, one can be assured that the investment made today will last well into the future. If additional functionality becomes an issue, the **M1Series™** can be easily upgraded to our **M1xSeries™** product. Should the existing manual control panel need to be replaced in the future, a factory manual panel is available for the **M1Series™** or **M1xSeries™** systems.

Each system can control up to:

<b>M1Series™</b>	<b>M1xSeries™</b>
4 Aggregate Bins	6 Aggregate Bins
3 Cement Silos	4 Cement Silos
5 Admixes	6 Admixes
2 Water	3 Waters

## Central Mix Capability

The **ProBatch™ M1Series™** is capable of controlling a single mixer central mix plant with the optional central mix package. An optional slump meter can be added to the **M1Series™** system in a separate stand-alone enclosure.

## Digital Counter

For plants using metered admixtures for batching, the **M1Series™** panel provides a single display to show the quantity (in pulses) of the material being dispensed by these devices. A selector switch helps determine which admix is currently being displayed. Whether batching in automatic or manual, the display or "counter board" provides a full manual backup.

## Serviceability

The **M1Series™** system has been engineered with ease of service in mind should the system require it. Every effort has been made to ensure that our service technicians can diagnose the problem fast. The door of the **M1Series™** system opens to allow maximum access to all internal components.

Should the need arise, a test probe is available allowing a service technician to aid the plant operator in isolating system and plant electrical issues.



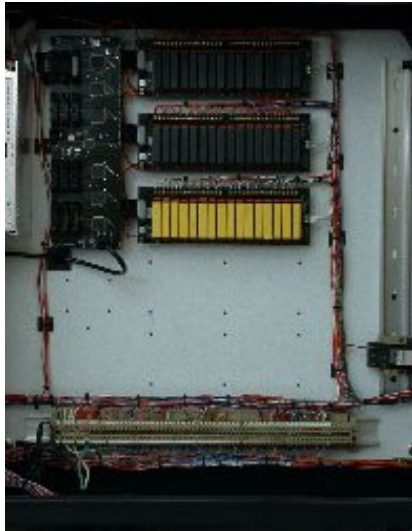
Each switch is mounted on the door and then plugged into a wiring harness. This allows a switch to be replaced (not reassigned) in minutes by simply unplugging it and plugging a new switch in its place without any soldering required.

## Workstation

All **ProBatch™** systems utilise a computer workstation enclosure that has been especially designed to withstand the harsh environment normally associated with the concrete industry. It has a dust filter that is easily accessible on the front of the enclosure to keep the system clean and four internal fans for maximum cooling. Every system is assembled using the highest quality components from companies like Intel®, 3Com®, and Microsoft®. Because we specify every component used in a **ProBatch™** system we are able to maintain a high level of reliability and standardisation. This enables our service technicians to provide batch plant personnel with answers fast, thereby providing better customer service. Specifications for the **ProBatch™** workstation are listed in overleaf.

# ProBatch™ M1Series™

## CONTROL ENCLOSURE



- Heavy-duty steel construction with easy front access.
- Rugged rocker switches in standard color-coded section for easy admix control.
- Small wall mounted enclosure reduces need for desk space.
- Simple solderless design for easy replacement of damaged components.
- Terminalised points for every function in the system.
- Test Probe for easy trouble-shooting.
- Quick disconnect connectors on all cabling.
- Single selectable admix counter for manual operation.
- 120/240 volt (high voltage) switch design

## WORKSTATION

- Heavy duty metal case with 4 cooling fans.
- Dust resistant design with easy to change filter on the front of the case.
- Intel® Pentium® IV Processor or better.
- 256MB RAM
- 30GB 7200 RPM Hard Drive.
- 48xCDROM
- 3.5 Floppy Drive
- Iomega 250 MB Zip Drive for backup / export.
- 64MB AGP Graphics adapter or better.
- High quality sound.
- Optional 10/100 Network interface card.
- Optional 56K Modem.
- High quality 17" Colour Monitor with integral speakers.
- Heavy duty keyboard with protective cover.
- Dust resistant mouse



## SOFTWARE

The **ProBatch™ M1 Series™** system uses **batchware™**, the Windows® based batching software, used by all of the ProBatch™ family of concrete automation systems. Please refer to the brochure on **batchware™** for further information.

## OPTIONAL ACCESSORIES

Hydronix Hydroprobe II moisture probe



OKI Data 320 Turbo Printer

15" or 17" Flat Panel Display



19" CRT Monitor

Remote Diagnostics with Modem



Network Interface Card

## PHYSICAL SPECIFICATIONS

- Control Enclosure 610mmW x 650mmH x 255mmD
- Work Station (Tower) 85mmW x 425mmH x 550mmD
- Work Station (Desk Top) 425mmw x 175mmH x 550mmD
- Monitor ( Standard 17") 400mmw x 425mmH x 425mmD
- Power requirements 110VAC or 240VAC  
50Hz or 60Hz
- Operating Temperature 4 - 32°C